

NOTES:

1. WTP PLANT DESIGN IS BASED ON CONTINUOUS OPERATION OF 6 UNITS AT 97% BMCR.
2. HOURLY REQUIREMENTS AVERAGED, BASED ON 24 HOUR CYCLE.
3. CONSTRUCTION WATER REQUIREMENTS ARE NOT INCLUDED.
4. RAINFALL VALUES ARE BASED ON ANNUAL AVERAGE RAINFALL.
5. FGD FIGURES ARE BASED ON WORST COAL QUALITY AND 90% LOAD FACTOR.

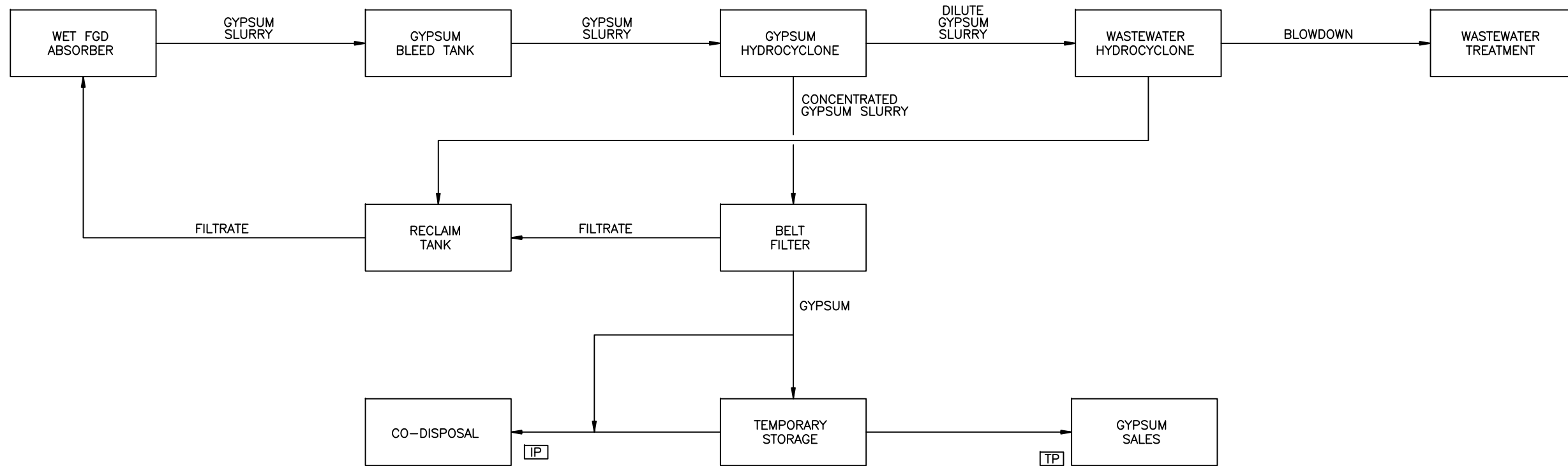
REV	DATE	DESCRIPTION	BY	CHKD	APP	REV	CHKD	APP	REF
00	21 07 08	PARAMETERS CHANGED.	VZ	LH	LEH				
00	21 07 08	FLOW RATES UPDATED & EQUIP. ADDED.	VZ	LH	LEH				
00	13 01 09	KKS NUMBERS ADDED.	LEH	LH	LEH				
00	0	FIRST ISSUE							
** REVISION **									
D.O.	REV	DATE	INDEX REFERENCE	REV	CHKD	APP	BY	APP	0.84
DRG	REGISTR	DATE	AUTHORISED FOR ESKOM BY						
DESIGN APPROVED	18 07 08	S.N.	M.MASENYA	18 07 08					
KKS APP	21 07 08	L.A.	N. MOODLEY	21 07 08					
DD	18 07 08	L.H.	ESKOM HOLDINGS LTD.						
CHKD BY	18 07 08	L.H.	REG. NO.						
SCALE	NTS	MG	2002/015527/06						

**MEDUPI POWER STATION
WATER BALANCE FLOW DIAGRAM
WITH FGD.**



0.84/509

SPF CODE	SHEET	REV
	2	3

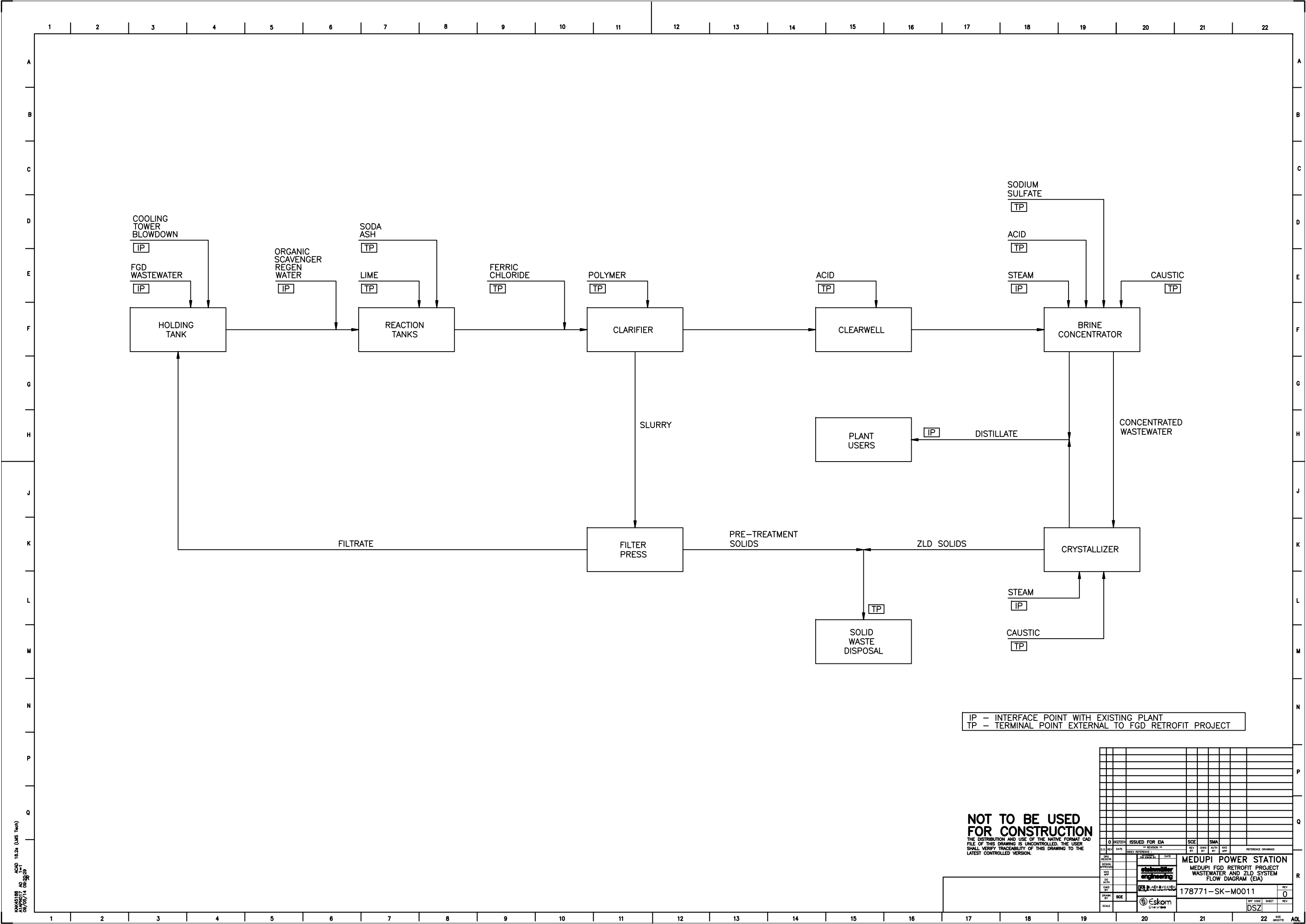


IP - INTERFACE POINT WITH EXISTING PLANT
 TP - TERMINAL POINT EXTERNAL TO FGD RETROFIT PROJECT

NOT TO BE USED FOR CONSTRUCTION
 THE DISTRIBUTION AND USE OF THE NATIVE FORMAT CAD FILE OF THIS DRAWING IS UNCONTROLLED. THE USER SHALL VERIFY TRACEABILITY OF THIS DRAWING TO THE LATEST CONTROLLED VERSION.

0 08/27/14 ISSUED FOR EIA		SCE	SMA	
DATE	ISSUED FOR EIA	BY	CHKD BY	APP'D BY
08/27/14	08/27/14			
MEDUPI POWER STATION MEDUPI FGD RETROFIT PROJECT GYPSUM HANDLING FLOW DIAGRAM (EIA)				
178771-SK-M0010			REV	0
DSZ			DRW	0

18.2a (LMS Tech)
 11-1
 09/05/14 08:38:48



IP - INTERFACE POINT WITH EXISTING PLANT
 TP - TERMINAL POINT EXTERNAL TO FGD RETROFIT PROJECT

NOT TO BE USED FOR CONSTRUCTION
 THE DISTRIBUTION AND USE OF THE NATIVE FORMAT CAD FILE OF THIS DRAWING IS UNCONTROLLED. THE USER SHALL VERIFY TRACEABILITY OF THIS DRAWING TO THE LATEST CONTROLLED VERSION.

ISSUED FOR EIA		SCE	SMA	REV	DATE
0	08/27/14				
MEDUPI POWER STATION MEDUPI FGD RETROFIT PROJECT WASTEWATER AND ZLD SYSTEM FLOW DIAGRAM (EIA)					
178771-SK-M0011				REV	DATE
				0	
DSZ				REV	DATE

18.2a (LMS Tech)
 09/05/14 08:30:28